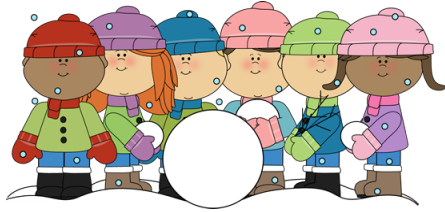


# Pembroke Hill School



## FIVE FOR OUTSIDE

Winter has arrived! Our students go outside everyday! Unless its below 15°F our students go out twice a day; once in the morning and later at lunch. **Please be sure that your child has a hat, mittens or gloves, snow pants, boots and a warm coat each day.**



## BLIZZARD BAGS

When a “blizzard bag” day is called each assignment is expected to be completed and turned in either electronically or on paper by the next school day. If you run into problems contact your teacher on the blizzard bag day. It is important to make the teacher aware if you run into any issues. The expectation is that students complete all the work for that assigned day to make up for a day of school.



## BEE - ING on time for school

It's vital that your child learns the importance of time management and is punctual on a daily basis. When a student is late, opportunities are missed to get off to the right start. School begins at 7:55 a.m.

# November Newsletter

## Upcoming Events:

- **Monday, Dec 3** - Friday, Dec 7: Book Fair in PHS library
- **Thursday, Dec 6:** Early Release (12:15 pm dismissal)
- **Friday, Dec 7:** NO SCHOOL- Teacher Professional Day
- **Saturday, Dec 8:** PALS Holiday Festival 9:00 a.m. - 1:00 p.m.
- **Wednesday, Dec 19:** Holiday Concert at PA 5:30 p.m.



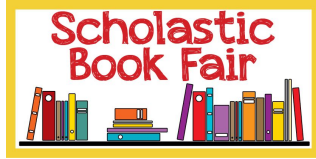
## PARENT- TEACHER CONFERENCES

Please be sure to sign up with your child's teacher for a conference. Each teacher will be sending home information on how it is to be scheduled. Our school report cards have a different look because of the new student information system called Alma. Your child's teacher will review the new format with you during your conference.



## HOLIDAY CONCERT

On Wednesday, December 19th at 6:45 p.m. the holiday concert will be held in the Pembroke Academy gymnasium and will last approximately 1 hour. PHS will follow the Village School's Holiday Concert which will begin at 5:30 p.m. Please plan on your student being there at 6:30 p.m. for the duration of the program.



December 3 - December 6

Our Book Fair will be held at Pembroke Hill School but will be for both Village and Hill families. It will run Monday, December 3 through Thursday, December 6 throughout the day and in the afternoon during parent conferences until 6 p.m. If students want to purchase books please put the check or money into a sealed envelope with their name and dollar amount with BOOK FAIR at the top. The Online book fair begins Nov 29-Dec 7th. The link is <http://www.scholastic.com/bf/pembrokehillemschool>. And can be found on our website. Books ordered on-line will be shipped to the school and delivered to the student.



Instead of traditional Holiday Teacher Gifts, consider purchasing a book for your child's classroom. There are several ways to do this:

- December Conferences: Book Wishes will be available outside classroom doorways.
- Teacher Wish List at Book Fair Book wish lists are posted on the PHS website
- Amazon Gift Cards
- Local Bookstore Gift Cards
- Scholastic Book online orders
- Scholastic Book Club Wish Lists

## OUR APPROACH TO SOCIAL EMOTIONAL CURRICULUM:

*Responsive Classroom* is an evidence-based approach to education that focuses on the strong relationship between academic success and social-emotional learning (SEL). The Responsive Classroom approach empowers us as educators to create safe, joyful, and engaging learning communities where all of our students have a sense of belonging and feel significant at Pembroke Hill School.



### Engaging Academics

Adults create learning tasks that are active, interactive, appropriately challenging, purposeful, and connected to students' interests.

### Positive Community

Adults nurture a sense of belonging, significance, and emotional safety so that students feel comfortable taking risks and working with a variety of peers.

### Effective Management

Adults create a calm, orderly environment that promotes autonomy and allows students to focus on learning.

### Responsive Teaching

Adults use knowledge of child development, along with observations of students, to create a developmentally appropriate learning environment.

